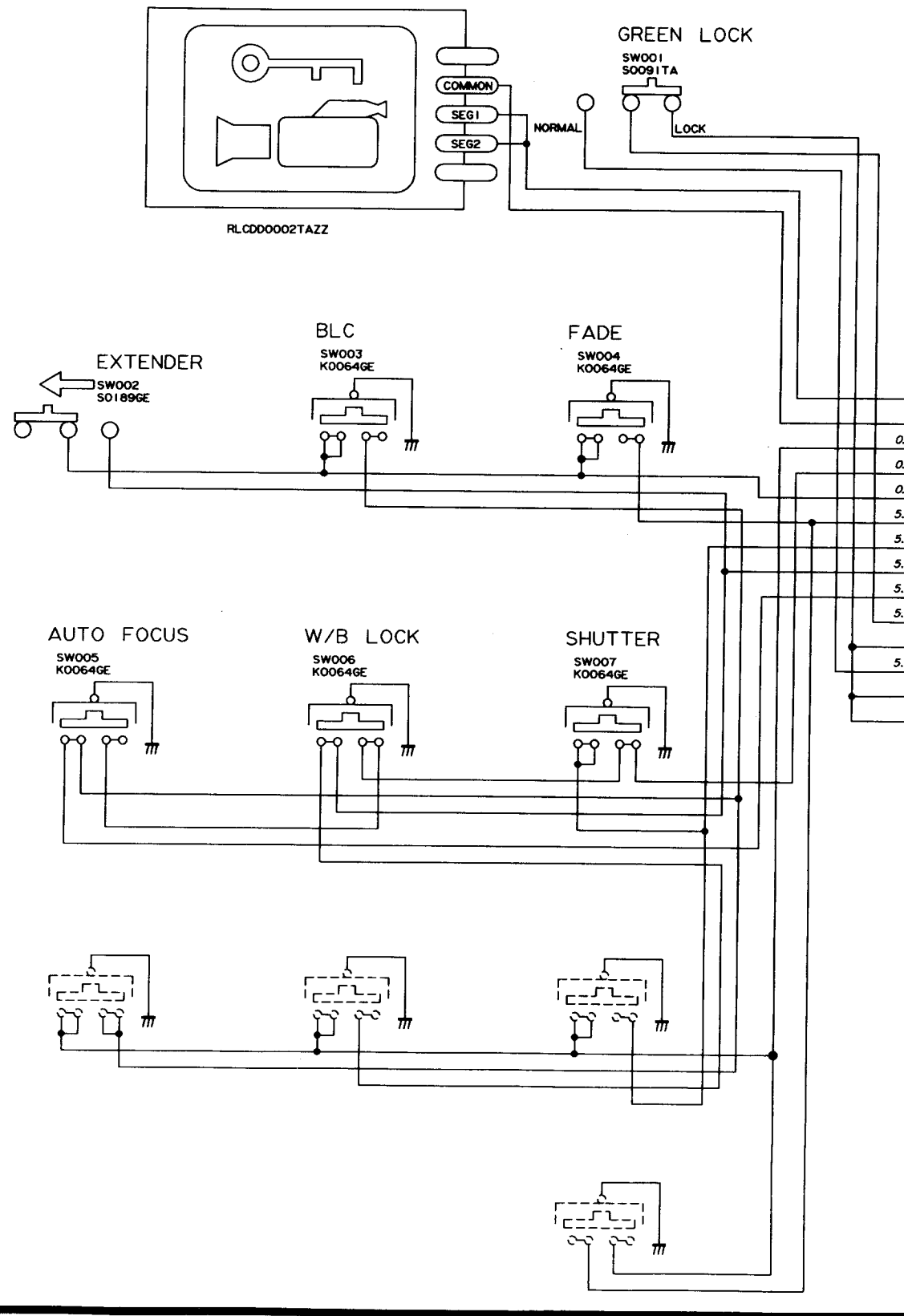


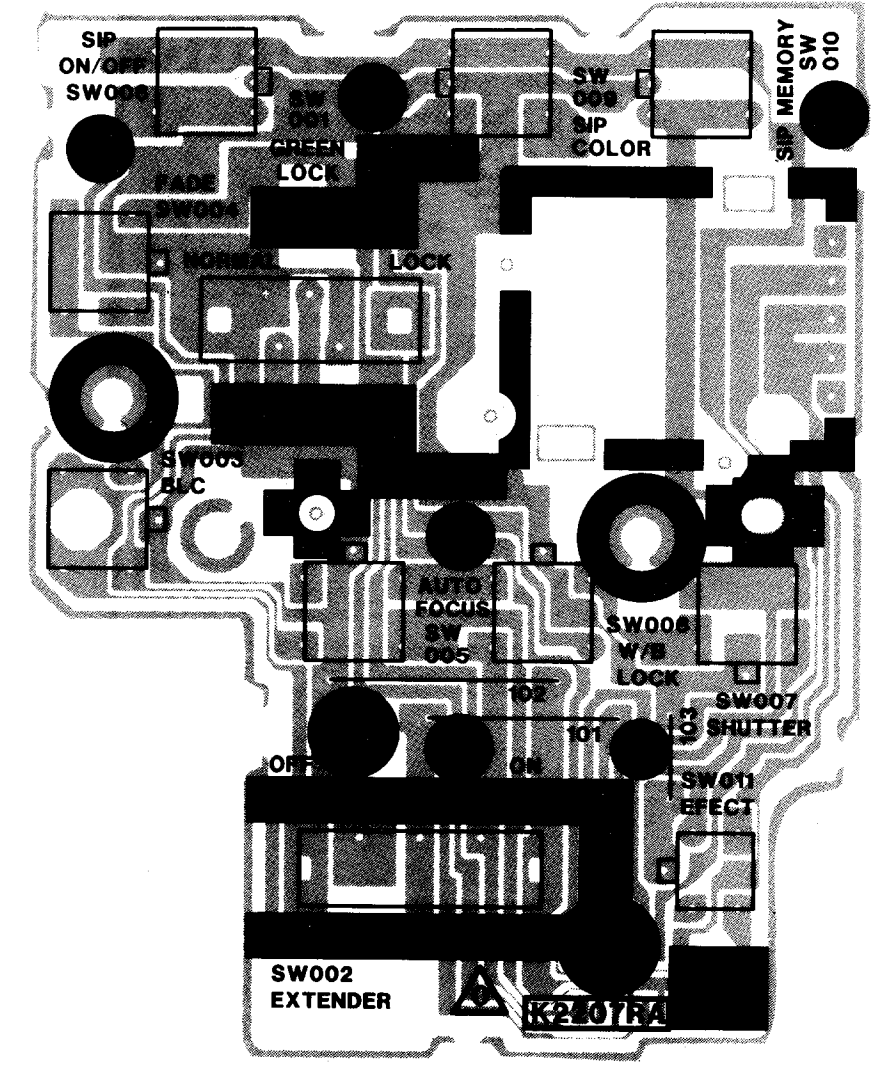
OPERATION CIRCUIT SCHEMATIC DIAGRAM / PWB DIAGRAM

DUNTK2207RA00(01)  
QPWBF2207TAZZ



CA		FA
1	LCD ⊕	1
2	LCD ⊖	2
3	KEY OUT 2	3
4	KEY OUT 1	4
5	KEY OUT 0	5
6	KEY IN 3	6
7	KEY IN 2	7
8	KEY IN 1	8
9	KEY IN 0	9
10	GREEN KEY	10
11	GND	11
12	+5V	12
13	GND	13
14	GND	14

POD1  
QCNCW1444TAZZ



Values in ( ) are for the playback mode